

University of Wisconsin-Fond du Lac

About Campus Life Academics Apply / Pay / Register Community Outreach Alumni & Friends

[Campus Life](#) » [News](#)

Living history: Holocaust survivor Eva Schloss wants world to "never forget"

6/5/15 By UW-Fond du Lac

Related story: [Eva Schloss story very different from Anne Frank's](#)

By *Monica M. Walk*

The atrocities happened seven decades ago, across an ocean, in other countries—but the Holocaust isn't relegated to ancient history in Fond du Lac. Students at the University of Wisconsin-Fond du Lac had information about the genocide of European Jews woven organically into classes across disciplines as the world marked the 70th anniversary of the end of World War II. Cross-institutional cooperation brought a Holocaust survivor to campus during 2015 spring semester.



The community was welcomed on campus to remember and honor the Nazi's human targets, both living and dead, by attending both the March premiere of Professor of Communications & Theater Arts Richard Gustin's play "A Sparrow Falls," and the recollections of Auschwitz-Birkenau survivor [Eva Schloss](#) in April. Both events included the audience in conversation.

UW-Fond du Lac may be a relatively small campus in a geographically small city, but it stood shoulder-to-shoulder with the rest of the world on this solemn

Campus Life

- [Athletics & Recreation](#)
- [Events](#)
- [Fine & Performing Arts](#)
- [News](#)
- [Student Organization Listing](#)
- [Campus Resources](#)

Become a Student

- 1 | [Explore areas of study](#)
- 2 | [Learn about life on campus](#)
- 3 | [Visit us and take a tour](#)
- 4 | [Find financial aid](#)
- 5 | [Apply!](#)

in to be involved in something like that,"
I UW-Fond du Lac Foundation Board
Schloss' presentation with his wife's
adin, whose German immigrant family
se operation to tomato growing during
y more talks will she be able to do? It was

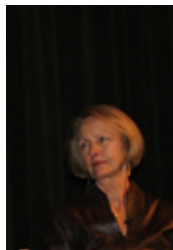
Weeks

—any at all, considering the horrendous
I especially now, 70 years after liberation.
ars about her experiences as a teenaged
decades, her willingness to speak about
Vienna to Amsterdam, their decision to go
two years later and capture on Eva's 15th
brother, and her experience surviving the
Schloss on travels around the world.

and prominently on her speaking itinerary
generosity of Viterbo University Holocaust
Schloss more than a year earlier for
at Anne Frank, Schloss' peer who did not
s played with Anne Frank after relocation
anently linked with and posthumously
her Otto Frank and Schloss' mother
camps. They devoted their lives to Anne's
otion of her diary. Schloss realized she
ly when invited to say a few words at an

adow. She is her own person with her own
ried mother of three who enrolled at
many until age 13, Nett took The
earch of facts about a topic her family did
nderstanding for her German family
survivors tell their stories while they can.
atters...people need to know and

I Prairie Theater



Clott nurtured a
relationship with Schloss,
eventually convincing her
to travel from her England
home to Wisconsin. The
tour included five days in



LaCrosse, and then stops
in Menominee, Marinette,
and Menasha,
culminating at

oss' flight home. The UW-Fond du Lac

: were in her living room listening to her,"
: of their availability; with the 340-seat
g for 150 was provided in a large
ccommodate members of the campus and

tage in a warm pool of light, recalling her
estions from her companion.

: had no anger and wasn't vengeful, as if
aged to survive and tell about it. She was
getting help at camp—and knew that
id Professor Emerita Patricia Roby, Ph.D.,
ist class with Professor Emeritus Michael
:n and honest about her feelings of Anne

iary and not finding it very special. "She
is said of the diarist she knew by the
ck," due to Frank's penchant for talking. "I
very grown-up about what she saw."

everything she said reinforced everything
oting that her personal story illuminated
ge: No matter what struggles, you

ould be an abstraction," Thorn said,
i of Jews committed on another continent.
een through hell, but here was a human

gularly fills to capacity—with headcounts
Thorn's history and Roby's film and
:dge in different art forms," says Thorn – to
d human climate of Nazi Germany.

f facets of the Holocaust experience by
ustrian compositions in a music course,
e Holocaust in a philosophy course,
ugh camp experiments in a sociology class,
eches in a communications class.

Richard Gustin's play," Roby said. "The
and took away a connection to the people
on (following the opening night of the
inse from students. That is what a
periences and empathizes."